

**2017 International open Star Class
Championship District 13
May 25 – May 28, 2017
Royal Netherlands Yacht Club KNZ&RV
Muiden, The Netherlands**

SAILING INSTRUCTIONS

1 RULES

- 1.1 The regatta will be governed by the rules as defined in *The Racing Rules of Sailing*.
- 1.2 No national authority prescriptions will apply.
- 1.3 RRS 32 will be changed to provide that courses will not be shortened. RRS 33b will not apply.
- 1.4 RRS 35 will be changed to provide that boats not finishing within 20 minutes after the first boat to finish will be scored “ did not finish” without a hearing.
- 1.5 RRS 63.1, A4 and A5 are changed in SI § 11, § 12.3 and § 15.2.
RRS 61.3, 62.2 and 66 are changed in SI § 16
- 1.6 RRS Appendix P will not apply.
- 1.7 If there is a conflict between languages the English text will take precedence.
- 1.8 Every person on board who has its domicile in the Netherlands shall have the appropriate license.

2 NOTICES TO COMPETITORS

- 2.1 Notices to competitors will be posted on the official notice board located at the hall of the KNZ&RV clubhouse opposite the race office.

3 CREW WEIGHT

- 3.1 Crews must comply with the class rule 31.1.3 at all times. During the series spot weight controls can be carried out. Ten percent (10%) of the crews can be weighted each day before the protest time limit expires. Crews found to be in violation of the rule shall be subject to disqualification from any race sailed on the day of the violation without a hearing. Notification of crews to be weighted will be posted on the official

notice board directly after the last boat has finished. The scale will be situated in the race office.

4 CHANGES TO SAILING INSTRUCTIONS

- 4.1 Any change to the sailing instructions will be posted before 0930 on the day it will take effect, except that any change to the schedule of races will be posted by 2000 on the day before it will take effect.

5 SIGNALS MADE ASHORE

- 5.1 Signals made ashore will be displayed at the flagpole at the eastern side of the KNZ&RV clubhouse in front of the 'Pampus Bar'.
- 5.2 When code flag AP is displayed ashore, the start has been postponed. The Warning Signal will be made not less than 60 minutes after lowering of the signal.

6 SCHEDULE

- 6.1 Dates of registration and measurement:
Thursday, May 25 from 1600 to 1800 and Friday, May 26 from 0900 to 1030.
- 6.2 Dates and number of races:
Friday, May 26 - Saturday, May 27 three races per day
Sunday, May 28 two or three races
- 6.3 The Race Committee may change the schedule. No more than three (3) races per day may be sailed as per STCR 34.3.7, Format C.
- 6.4 The scheduled time of the warning signal for the first race on Friday is 1210 and on Saturday and Sunday 1110. Races on the same day will be started a.s.a.p. after the preceding race is ended.
- 6.5 After a long postponement, to alert boats that a race or sequence of races will begin soon, an orange flag will be displayed with one sound for at least four minutes before a warning signal is displayed.
- 6.6 On the last day of the regatta no warning signal will be made after 1510.
During this Regatta the Dragon Class will participate as a separate starting group. First warning signals of the Dragon Class will be 10 minutes earlier as for the Star Class.

7 CLASS FLAG

- 7.1 The class flag for the Star Class will be flag F.
The class flag for the Dragon Class will be flag D

8 RACING AREAS

- 8.1 Attachment 1 shows the location of racing areas.
- 8.2 Each day the race area (east or west) for the first race of the day will be notified on the official notice board before 0930 hours.
- 8.3 Approximately in the middle of race area east a fixed steel yellow buoy is lying, called "Sport K". This buoy is no mark for the races.

9 THE COURSES

- 9.1 Course “3” or Course “4”, STCR 34.3, Format C, STCR 34.3.7 may be used. Attachment 2 shows the courses, including the approximate angles between legs, the order in which marks are to be passed, and the side on which each mark is to be left. The Race Committee signal boat will display, prior to or with the warning signal, the appropriate course number by placard to indicate the course.
- 9.2 The approximate compass bearing from the middle of the starting line to Mark 1 will be displayed on the Race Committee signal boat prior to or with the Warning Signal. Mark 3 (or Marks 3S + 3P) may be laid after the starting signal.
- 9.3 Courses will not be shortened. This changes RRS 32.
- 9.4 Lengths of the legs of the course will not be changed after the Preparatory Signal. This changes RRS 33(b).

10 MARKS

- 10.1 Marks 1 and 3 (or gate marks 3S and 3P) will be yellow cylindrical inflatable buoys, except as provided in SI 10.2.
- 10.2 A new mark will be a red cylindrical inflatable buoy. If a new mark is subsequently changed, it will be replaced by the original mark.
- 10.3 The starting marks will be the Race Committee signal boat at the starboard end, flying a KNZ&RV flag, and a dan buoy flying an orange flag at the port end (ODM). Mark ILM will be a Dan buoy flying a green flag.
- 10.4 The finishing marks for Course “3” will be the Race Committee finish boat at the starboard end and mark 1 at the port end, seen from the direction of the last mark. The finishing marks for Course “4” will be the gate marks 3S and 3P.
- 10.5 For Courses “3” and “4”, Mark 2 will be and stay a dan buoy with a red flag.

11 CHECK IN

- 11.1 Prior to the first Warning Signal of each race, boats shall sail past the starboard side of the Race Committee signal boat to be recorded. RRS A4 is changed to provide that boats not complying with this instruction will receive, without a hearing, the same score as a boat not starting. This changes RRS 63.1 and A5.

12 THE START

- 12.1 The starting line will be between the staff or mast from which an orange flag is displayed on the Race Committee signal boat and a dan buoy displaying an orange flag.
- 12.2 Near the inner starboard-end of the starting line a limiting mark (ILM) will be laid, which shall be left to starboard when starting.
- 12.3 A boat starting later than 10 minutes after her starting signal will be scored Did Not Start without a hearing. This changes RRS 63.1, A4 and A5.
- 12.4 The recall number for a boat shall be her sail number.

13 CHANGE OF THE NEXT LEG OF THE COURSE

- 13.1 To change the position of the next mark, the race committee will lay a new mark (or move the finishing line) and remove the original mark as soon as practicable. When in a subsequent change a new mark is replaced, it will be replaced by an original mark. The change will be signalled before the leading boat has begun the leg, although the mark may not yet be in position.

14 THE FINISH

The finishing line for Course “3” will be between a staff or mast displaying an orange flag on a Race Committee boat at the starboard end and mark 1, seen from the direction of the last mark.

The finishing line for Course “4” will be between the gate marks 3S and 3P. .

15 TIME LIMIT

- 15.1 The time limit will be as described in STCR 34.3.7 Format C.
- 15.2 Boats failing to finish within 20 minutes after the first boat sails the course and finishes will be scored Did Not Finish without a hearing. This changes RRS 35, A4 and A5.

16 PROTESTS AND REQUESTS FOR REDRESS

- 16.1 Protest forms are available at the race office, located at KNZ&RV clubhouse. Protests and requests for redress or reopening shall be delivered there within the Protest Time Limit.
- 16.2 Protests must be delivered within 75 minutes of the Race Committee signal boat docking time. Protest time will be posted on the official notice board. The same Protest Time Limit applies to all protests by the Race Committee and Jury about incidents they observe in the racing area and to request redress. This changes RRS 61.3 and 62.2
- 16.3 Notices will be posted on the official notice board no later than 20 minutes after the Protest Time Limit to inform competitors of hearings in which they are parties or named as witnesses. Hearings will be held in the protest room, located at the race office or in an upstairs room of the clubhouse, beginning at the time posted.
- 16.4 Notices of protests by the Race Committee or Jury will be posted to inform boats under RRS 61.1(b).
- 16.5 On the last scheduled day of racing a request for reopening a hearing shall be delivered
- (a) within the Protest Time Limit if the requesting party was informed of the decision on the previous day;
 - (b) no later than 20 minutes after the requesting party was informed of the decision on that day.
- This changes RRS 66.
- 16.6 On the last scheduled day of racing a request for redress based on a jury decision shall be delivered no later than 20 minutes after the decision was posted. This changes RRS 62.2.

16.7 The penalty for breaking SI 18.2, 19.1, 20, 21 and 23 will be at the discretion of the Jury. For SI 20 the penalty may be applied to all boats associated with the team or private support boat.

17 SCORING

17.1 The Low Point System, RRS Appendix A, will apply; modified so that each boat's series score will be the total of her race scores with the worst score discarded if more than four (4) races are completed. Nine (9) races are scheduled, of which three (3) races shall be completed to constitute a series.

18 LIABILITY and SAFETY

18.1 The safety of a boat and her entire management, including insurance, shall be the sole and inescapable responsibility of the owner and/or entrant.

18.2 Competitors leaving the race course before the end of a race shall inform the Race Committee as soon as possible. Competitors not leaving the dock on a race day shall inform the Race Committee at the race office in the KNZ&RV clubhouse.

19 REPLACEMENT OF CREW

19.1 Any request for a change of crew shall be submitted to the Race Committee in writing prior to 0930 hours on the day of the race for which the change is to be made.

19.2 A change of helmsman will be not permitted.

20 TEAM and PRIVATE SUPPORT BOATS

20.1 Coach boats will be required to register with the Organizing Authority.

20.2 Coach boats and private spectator boats are expected to render assistance to a boat in danger when requested by the boat, or at the request of the Race Committee or Jury.

20.3 Team leaders, coaches and other support personnel shall stay 100 meters outside areas where boats are racing from the time of the Warning Signal until all boats have finished racing.

20.4 A boat shall receive no outside assistance from support boats or otherwise once she has left the dock for the day until the finish of the last race of the day, except in the case of emergency and/or towing supplied by the organizer and available to all participants.

20.5 The penalty for breaking 20.1, 20.2, 20.3 or 20.4 will be at the discretion of the Jury up and to including disqualification of all boats associated with the team or private support boat.

21 TRASH DISPOSAL

21.1 Boats shall not put trash in the water. Trash may be placed aboard race committee boats.

22 HAUL-OUT RESTRICTIONS

22.1 All boats must be kept in the KNZ&RV marina, commencing on May 26, until the end of the championship.

22.2 All boats shall be afloat from May 26, 1100 hours, until the end of the regatta. Boats shall not be hauled out during the regatta except in accordance with prior written permission of the Race Committee.

23 DIVING EQUIPMENT AND PLASTIC POOLS

- 23.1 Underwater breathing apparatus and plastic pools or their equivalent shall not be used around boats between the preparatory signal of the first race and the end of the regatta.

24 RADIO COMMUNICATION

- 24.1 Except in an emergency, a boat shall neither make radio transmissions while racing nor receive radio communications not available to all boats. This restriction also applies to mobile telephones.

25 PRIZES

- 25.1 Perpetual Trophies will be awarded in accordance with STCR 24.
- 25.2 Prizes will be awarded to the skipper and crew as follows:
- | | |
|--------------------------|---------------------|
| Championship- | first through third |
| Daily Races- | first |
| Master's Division- | first through third |
| Grand Master's Division- | first through third |

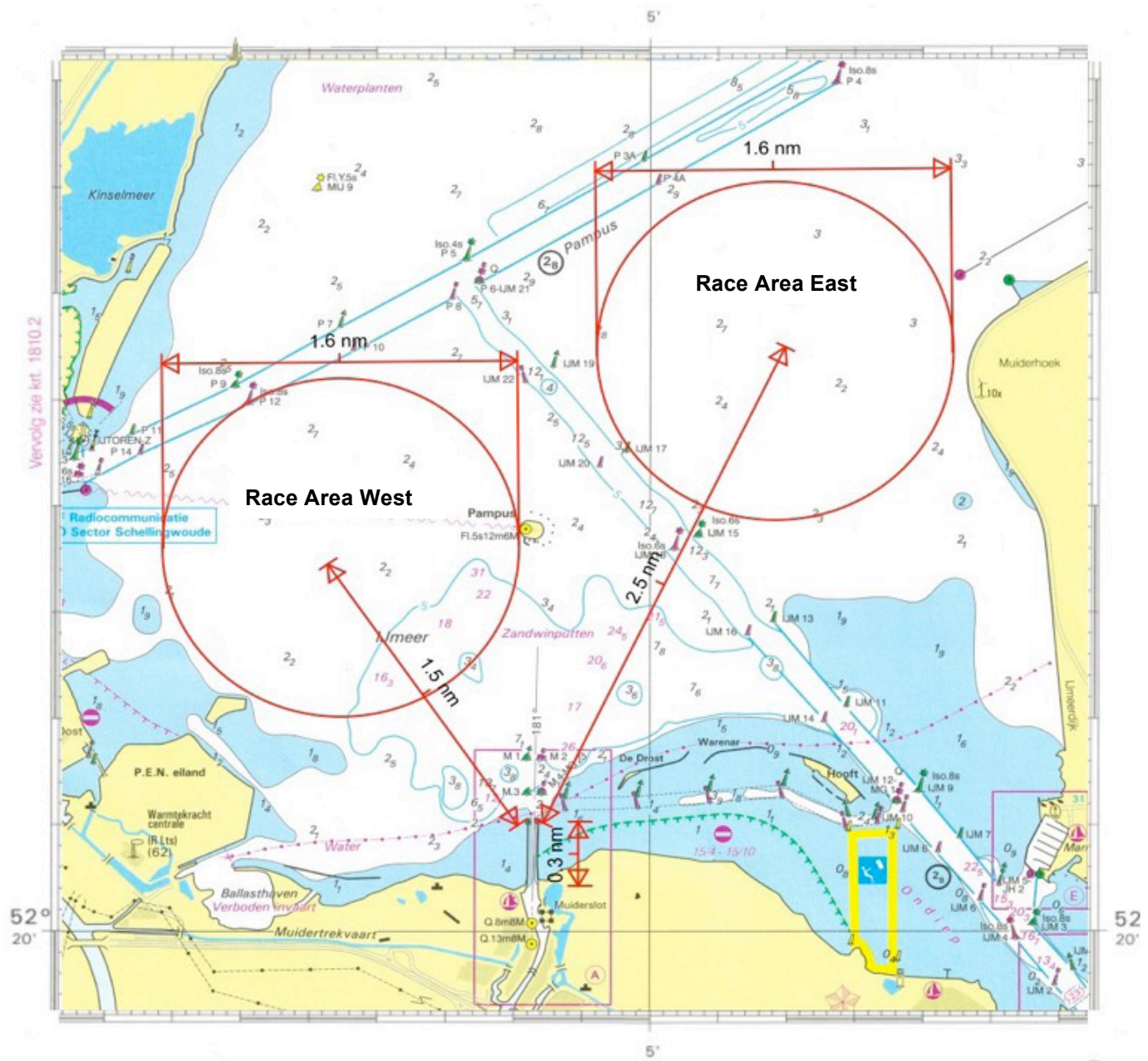
26 DISCLAIMER OF LIABILITY

- 26.1 Participants agree that no person or organisation involved in the conduct of this Championship will be liable for any accident, injury, fatality or damage, or loss of boat or property arising out of a participant's preparation for or participation in any on-the-water or on-shore activities (whether social, recreational, launching, hauling, boat storage or otherwise) associated with the Championship. Nothing in these Sailing Instructions or oral statements by the Organizing Authority, their officers, directors or agents, shall modify or otherwise impair the effect of the Waiver of Liability Form, the execution of which is a condition of entry.

27 INSURANCE

- 27.1 Each participating boat shall be insured with valid third-party liability insurance with a minimum cover of € 1,5 million per event or the equivalent.

Attachment 1



Attachment 2

Course 3 and Course 4

Note: the finish line differs from this sketch and is described in SI § 14

